

1 SITE PLAN  
1/4" = 1'-0"



LOCATION MAP  
NOT TO SCALE

DISTRICT : RSA-5

	REQUIRED	EXISTING	PROPOSED
LOT AREA	960 SQ. FT.	1,350 SQ. FT.	SAME AS EXIST.
LOT WIDTH	16 FT	18 FT.	SAME AS EXIST.
MAX.OCCUPIED AREA	75%	69.07 %	SAME AS EXIST.
FRONT YARD DEPTH	8 FT	34 FT	SAME AS EXIST.
MIN. REAR YARD DEPTH	9 FT	20 FT	SAME AS EXIST.
BUILDING HEIGHT	38 FT	30'	SAME AS EXIST.

CODES AND ZONING APPLICABLE BUILDING CODES:

PHILADELPHIA CODE	2018
INTERNATIONAL BUILDING CODE	2018 IBC
INTERNATIONAL ENERGY CONSERVATION CODE	2018
INTERNATIONAL EXISTING BUILDING CODE	2018
PHILADELPHIA FIRE CODE	2018
NATIONAL ELECTRIC CODE	2017
PHILADELPHIA ELECTRICAL CODE	2018
INTERNATIONAL PLUMBING CODE	2018
INTERNATIONAL MECHANICAL CODE	2018 IMC
ANSI A117.1	2009
INTERNATIONAL RESIDENTIAL CODE	2018
INTERNATIONAL FUEL GAS CODE	
CURRENT CITY OF PHILADELPHIA AMENDMENTS PER 2018 IBC	

JOB NO. :  
1616

PROJECT:  
PROPOSED 3-DWELLING UNITS @  
616 N 2ND ST

LANDLORD:  
NH IMPORT INC

LOCATION:  
1616 N 2ND ST  
PHILADELPHIA, PA 19122

DATE:

DRAWN BY:

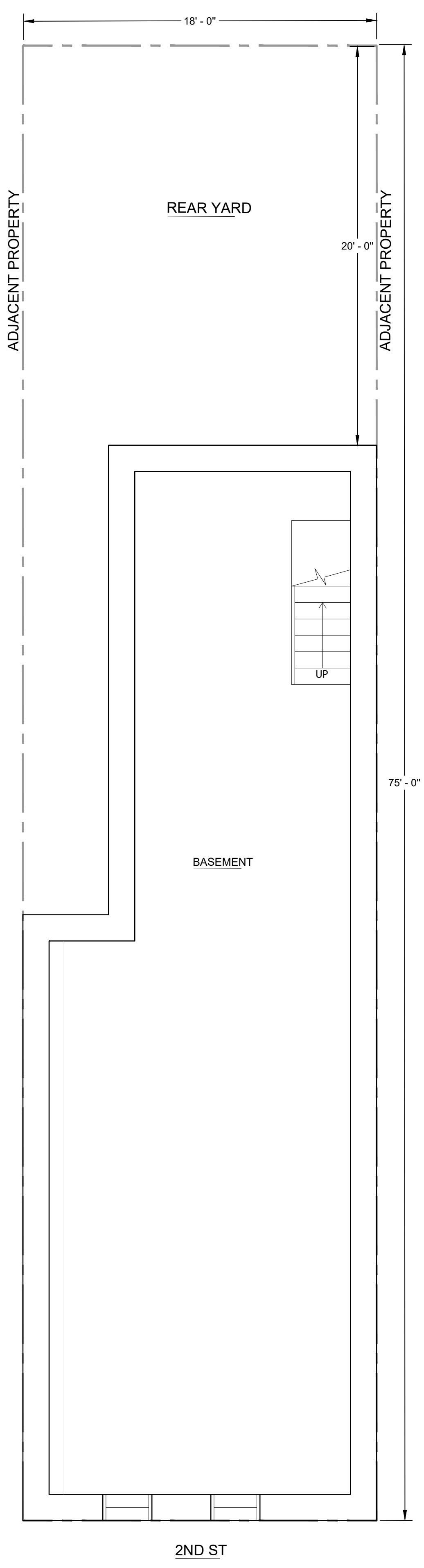
CHECKED BY:

REVISIONS:

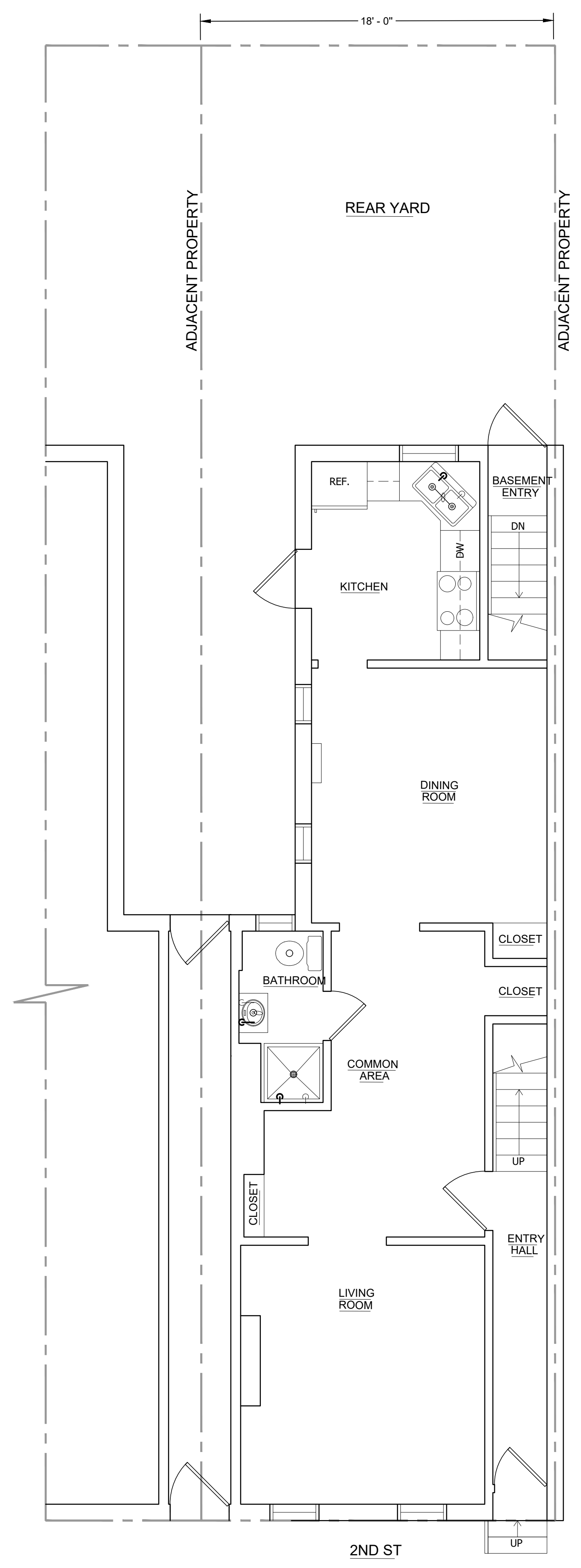

SITE PLAN

SHEET NO.

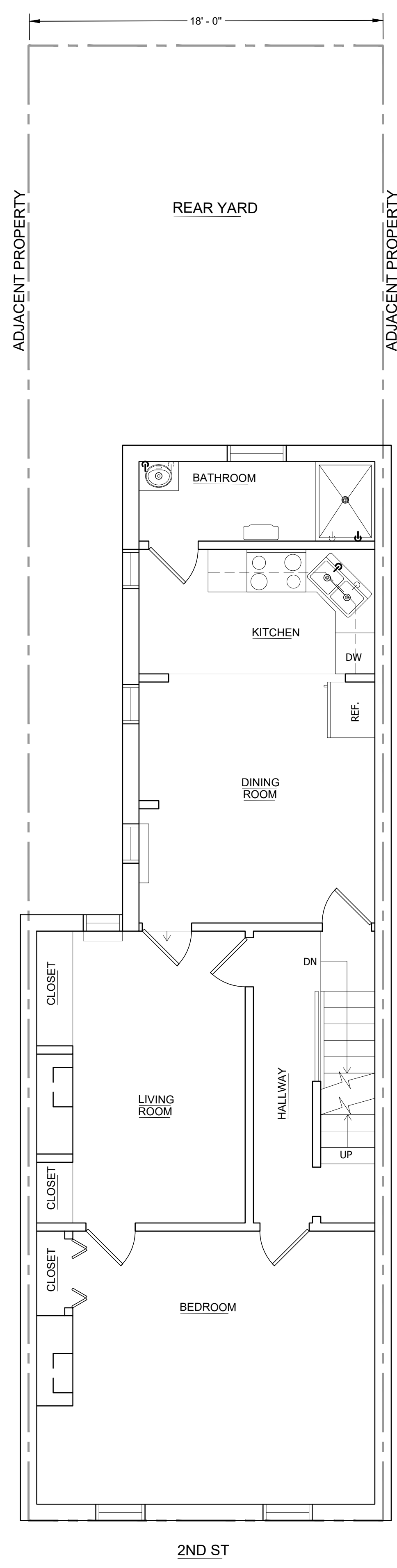
G-1.0



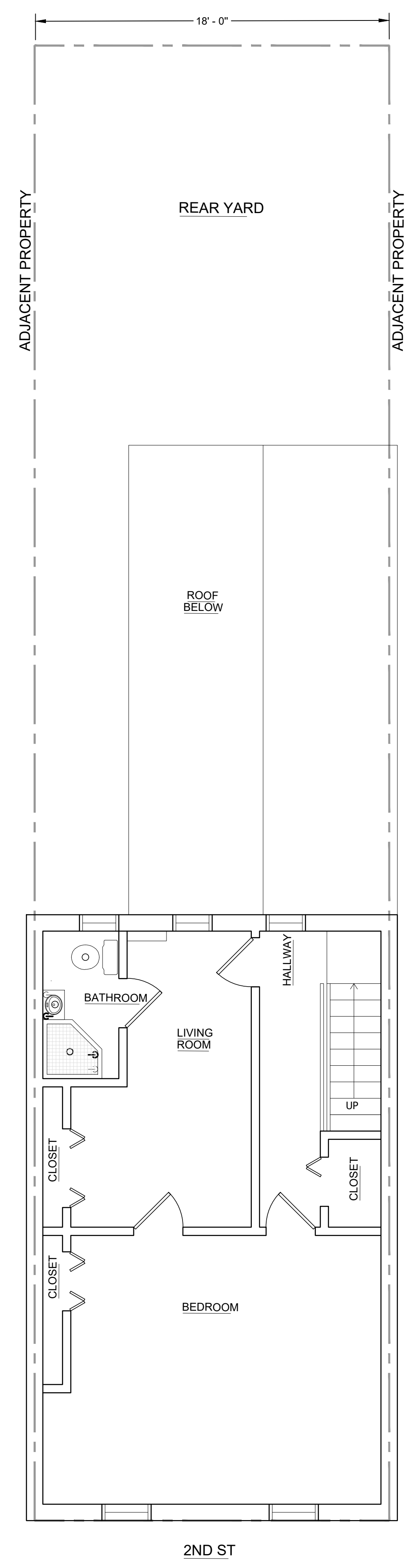
1  
A-01 EXISTING BASEMENT PLAN  
SCALE : 1/4" = 1' - 0"



2  
A-01 EXISTING FIRST FLOOR PLAN  
SCALE : 1/4" = 1' - 0"



3  
A-01 EXISTING SECOND FLOOR PLAN  
SCALE : 1/4" = 1' - 0"



4  
A-01 EXISTING THIRD FLOOR PLAN  
SCALE : 1/4" = 1' - 0"