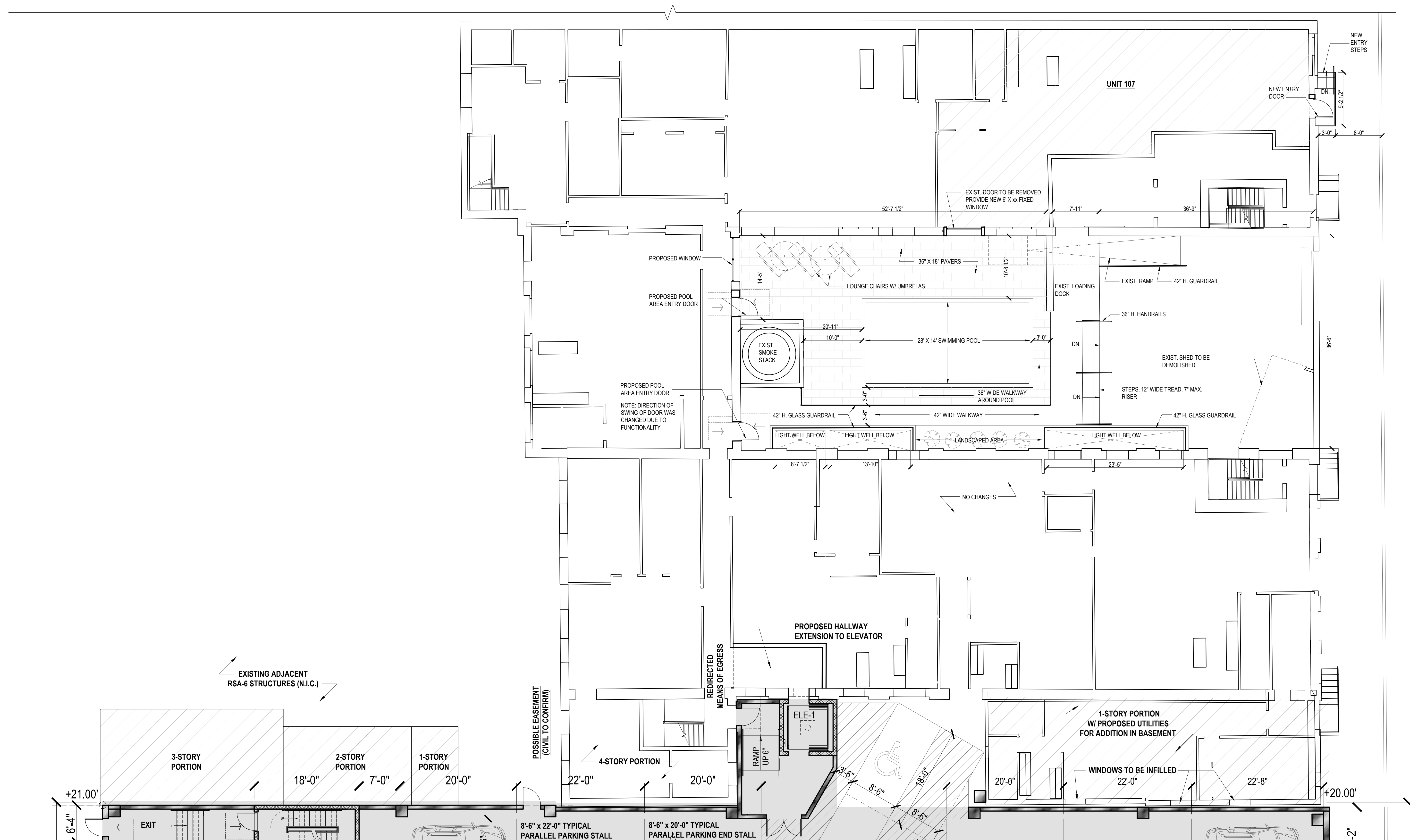


2 BASEMENT PLAN
SD0.0
1/8" = 1'-0"

#	DATE	ISSUE / REVISION	DRAWN BY:	REVIEWED BY:
7	05.18.2023	REVISED UNIT PLANS	EQ	RO
8	06.19.2023	UPDATED PLANS, ELEVATIONS	JK	EQ
9	06.28.2023	UPDATED PLANS, ELEVATIONS	JK	EQ
10	07.05.2023	UPDATED BLDG. HEIGHT	JK	EQ
11	07.14.2023	BASEMENT RENO PLANS	JK, EQ	EQ
12	07.26.2023	YARD AREA PLAN	JK, EQ	EQ



2 FIRST FLOOR PLAN - YARD
SD1.01 1/8" = 1'-0"

1321-25 N. 5TH ST. Philadelphia, PA



#	DATE	ISSUE / REVISION	DRAWN BY:	REVIEWED BY:
7	05.18.2023	REVISED UNIT PLANS	EQ	RO
8	06.19.2023	UPDATED PLANS, ELEVATIONS	JK	EQ
9	06.28.2023	UPDATED PLANS, ELEVATIONS	JK	EQ
10	07.05.2023	UPDATED BLDG. HEIGHT	JK	EQ
11	07.14.2023	BASEMENT RENO PLANS	JK, EQ	EQ
12	07.26.2023	YARD AREA PLAN	JK, EQ	EQ

SD1.01
FLOOR PLANS